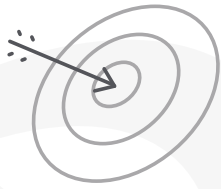




OneSCM® Business Intelligence Dashboards



Competitive Advantage

OneSCM® BI Dashboards deliver critical near real-time performance insights that allow mid-market companies to continually improve the efficiency and value of their supply chains.

Highlights

- High level visibility into supply chain activity
- Drill down into specific activities
- Procurement, Shipping, Invoicing, Supplier Performance
- Easy to gauge measurement against KPIs
- Built into OneSCM platform
- Cloud-based, affordable subscription pricing

Leveraging Supply Chain Metrics for Business Intelligence

The hype around “big data” has in some ways obscured the true business need for many mid-market companies: knowing what data you need and how to leverage it effectively. In other words, knowing not just how to process quantity, but how to find and focus on the relevant data. Companies need to turn the raw data into actionable business intelligence for effective, measurable performance improvements. Having that intelligence in a clear, actionable format can make the difference between a lagging supply chain and a high performing network.

OneSCM® Business Intelligence Dashboards

OneSCM Business Intelligence Dashboards pull relevant supply chain data into clear, actionable reports that provide critical visibility into key supply chain functions including Procurement, Shipping/Logistics, Accounts Payable, and overall supplier performance. The interactive dashboards allow supply chain, procurement, logistics and finance teams to monitor supplier and trading partner activity at the top level, as well as dig into the performance of specific buyers or suppliers, and specific areas such as total spend, average PO cycle time and average time to payment. KPI thresholds can also be set to provide visibility into performance relative to target goals. OneSCM dashboards offer flexible chart views in a variety of formats to allow supply chain teams to perform real-time, on-screen analysis and troubleshooting via a number of filters including date range, items, trading partners and buyers. All charts and reports can be easily exported to PDF for use in performance reports.



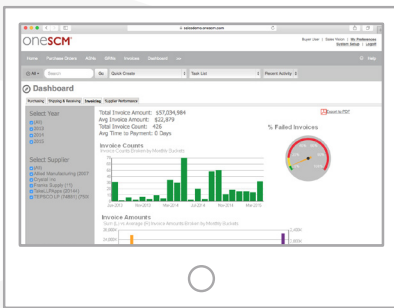
Purchasing Dashboard

Displays data to help procurement teams measure overall procurement activity as well drill downs by date, buyer, or supplier. This provides visibility into potential problem areas and enables proactive intervention when performance is not meeting KPI thresholds. Measures include: total spend, average time to acknowledgement, and average PO cycle time.



Shipping & Receiving Dashboard

Displays data to help monitor delivery and receipt of ordered materials. Provides visibility into PO fulfillment status, including inbound shipments. Measures include: ASN and GRN counts, and total received, accepted and rejected quantity.



Invoicing Dashboard

Provides metrics and data on overall account payable activities related to time, accuracy and spend, as well as drill downs into activity by date, buyer or supplier. Available information includes: invoice count and average time to invoice payment.



Supplier Performance Dashboard

Displays data to help both procurement and finance teams monitor overall trading partner activity as well as by specific suppliers. This provides on-demand visibility into KPIs to address potential issues as well as provide context for SLAs and other contractual agreements. Measures include: average time to acknowledge a PO and on-time delivery rate.

Need better supply chain analytics? Call us at 800-324-5143 to get started.

Work with us for a better supply chain

✉ info_scm@takesolutions.com

☎ 800-324-5143

🌐 linkedin.com/company/takesupplychain

🐦 twitter.com/takesupplychain

📺 youtube.com/takesupplychain

MORE ABOUT ONESCM®

oneSCM is a supply chain collaboration suite that helps companies collaborate smarter and execute faster by integrating internal systems and external trading networks to allow data and decision-making to flow quickly, seamlessly, and confidently. Solutions span Demand Collaboration, Procurement Collaboration, Shipping Collaboration, and AP Automation. For more information, visit onescm.com.

ABOUT TAKE SUPPLY CHAIN

For more than a decade, TAKE Supply Chain has been selected by leading companies across the globe for solutions that deliver increased accuracy, visibility and responsiveness across their supply chains. We offer robust collaboration and data collection solutions that leverage existing and emerging technology to support the increased challenges of expanding global supply chains. Together with our customers, we are regular recipients of supply chain industry awards for technology, value and innovation.